

**FRIDAY DECEMBER 15TH  
EARLY RELEASE  
12:00 DISMISSAL**



**PLEASE NOTIFY THE OFFICE OF ANY PICK UP  
CHANGES.**



Janssen  
Elementary  
ANNUAL

# SCIENCE FAIR

FRIDAY JANUARY 19<sup>TH</sup>

8:45 TO 11:30 A.M.

## BE A SCIENTIST

Are you interested in demonstrating an experiment? Then the Science Fair is for you! Be creative and be ready to amaze your peers with science!

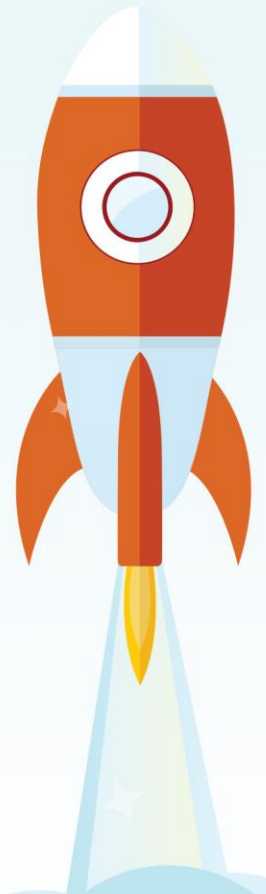
## WHO CAN PARTICIPATE?

Students in grades 5K through 4<sup>th</sup> grade can join in on the fun! (5K students do need a parent or sibling to work with, though.)

## SIGN ME UP!

CLICK ON THE LINK BELOW OR TYPE IN THE GOOGLE FORM ADDRESS ONLINE. Decide if you are going to work alone or in a group. The deadline to sign up is **Friday, January 5<sup>th</sup>**.

[HTTPS://TINYURL.COM/2VMBNAV C](https://tinyurl.com/2vmbnavc)





JANSSEN ELEMENTARY

# SPRING CONCERT 2024

**TUESDAY, MARCH 12TH 2024**

- GRADE 1 - 2:30 & 6:00 PM, STUDENTS LINE UP IN LUNCH ROOM NO SOONER THAN 5:50
- GRADE 2 - 3:00 & 7:00 PM, STUDENTS LINE UP IN LUNCH ROOM NO SOONER THAN 6:50

**WEDNESDAY, MARCH 13TH 2024**

- 5K PERFORMANCE - 2:00 PM (ROSE AND JOHNSON) AND 2:30 PM (DRIESSEN AND HAAS)

**THURSDAY, MARCH 14TH 2024**

- GRADE 3 - 2:30 & 6:00 PM, STUDENTS LINE UP IN LUNCH ROOM NO SOONER THAN 5:50
- GRADE 4 - 3:00 & 7:00 PM, STUDENTS LINE UP IN LUNCH ROOM NO SOONER THAN 6:50



# Let's bring in the holiday season with some fun dress-up days for everyone!

Monday, December 18th	Christmas color day! Wear Red & Green today
Tuesday, December 19th	Dream a little Dream! Wear Cozy PJs and Slippers
Wednesday, December 20th	Tree Topper Day! Dig out your favorite holiday hat, headband, or reindeer antlers, or tree topper to wear.
Thursday, December 21st	Clash of Carolers! Let's wear our class colors! 5K - purple Gr.1 - yellow Gr.2 - green Gr.3 - blue Gr.4 - red Paras-orange MAPES- black Office- pink
Friday, December 22nd	Christmas break is here! Break out the Christmas colors, hats, PJs, and shirts/sweaters!



# Kimberly Choir Clinic

All students located in the Kimberly School District in grades 3-6 are invited to Kimberly High School for a fun day of singing! High school choir members will help lead students in learning fun music and putting on a short concert!

**SATURDAY, JANUARY 13 | 12:00 PM - 3:00 PM @ KIMBERLY HIGH SCHOOL**

Families are invited to attend a short concert at 2:45 pm in the KHS Auditorium!

## **REGISTRATION INFORMATION:**

REGISTRATION DEADLINE: FRI. December 15th  
REGISTRATION FEE: \$25 (cash/check to Kimberly Choir)  
*\*\*Fee includes a choir t-shirt, music, pencil, and snack*  
**CLICK HERE OR SCAN THE QR CODE TO REGISTER!**



*For more information please contact Pam Westphal  
at [pwestphal@kimberly.k12.wi.us](mailto:pwestphal@kimberly.k12.wi.us)*



# JANSSEN

## events 2023-2024

September 2023				
M	T	W	TH	F
NS	5	6	7	8
11	12	13	14	15
18	19	20	21	AM
25	26	27	28	29

October 2023				
M	T	W	TH	F
2	3	4	5	6
9	10	HS	12	E2
16	17	18	19	20
23	24	25	NS	NS
30	31			

November 2023				
M	T	W	TH	F
		1	2	3
6	7	Q	E2&C	10
E2&C	14	MS	MS	AM
20	21	22	NS	NS
27	28	29	30	

December 2023				
M	T	W	TH	F
				1
4	5	6	7	E2
11	12	13	14	AM
18	19	20	21	22
NS	NS	NS	NS	NS

January 2024				
M	T	W	TH	F
NS	2	3	4	5
8	9	10	11	E2
15	16	17	18	Q/AM
22	23	I	I	26
29	30	31		

February 2024				
M	T	W	TH	F
			1	2
5	6	7	8	NS
12	13	HS	15	16
19	20	21	22	E2
26	27	28	29	

March 2024				
M	T	W	TH	F
				1
4	5	6	7	AM
11	12	13	14	15
18	19	20	21	Q/E2
25	26	27	28	NS

April 2024				
M	T	W	TH	F
NS	NS	NS	NS	NS
8	9	10	11	12
15	16	17	18	19
22	23	24	25	E2
29	30			

May 2024				
M	T	W	TH	F
		1	2	3
6	7	8	9	AM
13	14	15	16	17
20	21	22	23	EN
NS	28	29	30	31

June 2024				
M	T	W	TH	F
3	4	5	6	Snow Day Make-up

If needed, snow day make-up will be on Friday, June 7th

*PTO Meetings*  
in the Janssen Library  
**5:30 p.m.**  
September 21  
October 19  
November 14  
January 16  
February 20  
March 19  
April 23  
May 21

NS No School

- AM** AM classes only (exception: No school for 4K) KHS dismissed at 11:31am, JRG & Intermediate dismissed at 11:20am, Elementary dismissed at 12:00pm
- E2** Elementary Early Release - Elementary dismissed at 2:00pm (Exception: 4K morning classes 8:45am - 10:45am, afternoon classes 11:45am - 1:45pm)
- EN** Elementary Noon Release - All Elementary students dismissed at 12:00pm (exception: No school for 4K)
- HS** High School Parent/Teacher Conferences - KHS students dismissed at 2:00pm
- MS** Middle School Parent/Teacher Conferences - JRG students dismissed at 2:00pm except on November 16th - students will have a full day of school
- I** Intermediate School Parent/Teacher Conferences - Intermediate students dismissed at 2:00pm
- E2&C** 4K-4th Gr. Parent Teacher Conferences; No school for 4K; Grades 5K-4th Grades dismissed at 2:00pm
- Q** End of quarter

**WANT REMINDERS?**  
Text **janssenpto** to **81010**

### YEAR-ROUND APPAREL STORE



### Events and Fundraisers

- Oct 3 - Tom's Drive-In Night
- Oct 11 - Wreath Sale Starts
- Oct 13 - Fun Run
- Nov 3 - Wreath Orders DUE
- Nov 14 - Buddy Breakfast
- Nov 16 - Panda Express Night
- Nov 17 - Wreath Pick-Up
- Jan 17 - Mike's Popcorn Sale Starts
- Feb 8 - Mike's Popcorn Due
- Feb 23 - Bingo Night & Popcorn Pick Up
- Mar 17-22 - Read-a-Thon Week
- Apr 22-26 - Penny War
- Apr 23 - Tom's Drive-In Night
- Apr 24 - Culver's Sale Starts
- May 6-10 - Teacher App. Week
- May 6 - Culver's Orders DUE
- June 4 - 4th Grade Celebration
- June 6 - Last Day Carnival