



PAPERMAKER NEWS

KIMBERLY AREA SCHOOL DISTRICT NEWSLETTER

ISSUE NO. 13 | WWW.KIMBERLY.K12.WI.US

SPRING 2024

AN EARLY AND STRATEGIC APPROACH TO CAREER READINESS

“What do you want to be when you grow up?” It’s a question filled with magic, opportunity, and dreams of what could be. We want our students to ask themselves this question continuously. Planning for the future is a complex task unique to every student and is usually accompanied by challenges and continuous change. Through the Career Planning process, Kimberly Area School District (KASD) gives every student the tools and opportunity to explore their future and reach their potential.



Career Planning here isn't just educational—it's a transformative experience that empowers students to grasp the reins of their future with confidence and curiosity. With a unique blend of encouraging self-discovery and providing captivating opportunities, Career Planning starts immediately at the elementary level. By the time our students start high school, they will already have a strong understanding of their strengths, interests, and possible career paths.

The opportunities our students have encountered this year already seem endless. Field trips include the Barlow Planetarium, Bubolz Nature Preserve, the Performing Arts Center, a local farm visit, and the Weis Museum, just to name a few. It didn't stop there; students also welcomed guest speakers and participated in several lessons and activities focused on basic life skills. While excelling in academics is important, students also need skills to take on learning challenges, make good decisions, manage strong emotions, and get along with others.

At KASD, Career Planning is about students learning about themselves, key life skills, and available career paths. We strive to help each student reach their potential in any path they choose. By the time they graduate, our goal is that each student has an individualized plan for their future and an answer, or at least a direction, to that age-old question, “What do you want to be when you grow up?”

Dive deeper into our Career Planning process on our website at <https://bit.ly/KASDCareerPlanning>. ■

FROM THE SUPERINTENDENT



Welcome to the newest edition of the Papermaker News. As a successful public school district, our

schools have something for everyone! We are proud to be the highest-achieving school district in the area and offer a wide variety of club and extracurricular activities for our students. Our growth in Career Planning and the development of a strong trades program create the backbone of our comprehensive offerings, which provide choices to our students. This edition of Papermaker News will highlight just a few.

Sincerely,

Robert Mayfield, Ed.D.
Superintendent

IN THIS ISSUE

- Janssen Science Fair
- Regional Skills USA
- MakerSpace
- JRG Award
- KHS Mural
- Tech Ed. Construction

OUR VISION: *Students will grow as problem solvers to reach their potential in academics, arts and co-curriculars.*



EXCELLENCE IN ACTION: HIGHLIGHTS IN OUR SCHOOLS



KHS Trade Students Excel at FVTC Regional Skills USA Contest

Kimberly High School (KHS) trade students showcased their talents and dedication at the Fox Valley Technical College (FVTC) Regional SkillsUSA contest. Students were selected to compete in contests based on their career interests and academic/skill performance in class. Great job to these students for pursuing excellence in their work! Go to <https://bit.ly/SkillsUSAKhs> for the full list of winners, and stay tuned for the State Competition results later this spring. ■

JRG Student Council Earns State Recognition

JR Gerritts (JRG) Middle School Student Council has clinched the Wisconsin Association of School Councils (WASC) Spirit of Excellence award at the state level. This award showcases the incredible talent and spirit of our students. Read more about this amazing achievement on the website at <https://bit.ly/jrgspirit>. ■



Planting Seeds for Success

At the Planting Seeds for Success event hosted by our 4K Center for Literacy, families gathered for an enchanting evening filled with creativity and learning. The essence of spring was in full bloom as everyone participated in planting activities, crafted their very own plant cups, and indulged in flower-themed crafts. With a sprinkle of education and a lot of fun, the night was made even sweeter with delicious treats and engaging storytime sessions. ■

From Individual Creativity to Collective Beauty

The Art Abilities class at KHS has recently completed a remarkable mural project on the first floor of the high school, showcasing both individual creativity and collaborative effort. The centerpiece is a powerful message: "We are each unique and beautiful, but together we are a masterpiece." This mural not only brightens up our school environment but also serves as a daily reminder of the power of teamwork and creativity. ■



Annual Science Fair Held at Janssen

Students from kindergarten to fourth grade presented their scientific research at the annual Janssen Elementary Science Fair. The project-based learning allows students to explore the scientific method while integrating topics of interest. ■





MAKERSPACE IGNITES STEM PASSION IN K-4 STUDENTS



In the spirit of innovation and collaboration that defines the Kimberly Area School District (KASD), we're thrilled to introduce an extraordinary educational venture: MakerSpace. Currently in its infancy, MakerSpace is tailored for K-4 students and is being offered at Westside Elementary School. MakerSpace is an exciting opportunity that challenges students to work together using problem-solving skills while building an enthusiasm for STEM (Science, Technology, Engineering, and Mathematics) from an early age.



Think of MakerSpace as the ultimate playground for young minds, where STEM isn't just a subject—it's an adventure. Here, students aren't just students; they're problem solvers, inventors, and future innovators teaming up to tackle exciting projects. Whether they're programming robots or piecing together models, these young creators are diving headfirst into a world where challenges are just puzzles waiting to be solved.

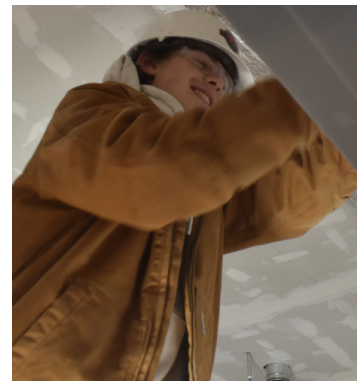


But it's not all about the tech and gadgets. The heart of MakerSpace lies in its spirit of collaboration and encouragement. It's a place where ideas fly free, feedback is the fuel for improvement, and every success and "failure" is celebrated. This buzzing environment nurtures not just a love for learning but a passion for exploring the endless possibilities of what they can achieve.

This is just the beginning. Our vision for MakerSpace extends beyond the walls of Westside Elementary. We plan to expand this opportunity to all elementary students in our district by fall 2024. Why MakerSpace, you ask? Because we're dedicated to nurturing problem-solvers ready to face the world. It's perfectly aligned with our Plan for Excellence, arming our students with the skills they need for a future they're still dreaming up. ■

KHS TRADES EXPANSION NEARS COMPLETION

Kimberly High School (KHS) building and construction students continue to make progress and are near completion of the trades expansion. Following the completion of the exterior, students have been focused on interior work, which includes drywall, electrical work, painting, cabinets, and trim. KASD approved the addition after seeing enrollment in Career and Technical Education (CTE) courses more than double in the last ten years. The expansion will allow the District to meet the needs of learners and grow in the specific areas of building and construction, welding, and electrical work. It also provided current KHS students with a unique learning experience since they constructed the expansion. ■





Kimberly Area School District
425 S Washington Street
Combined Locks, WI 54113

BOARD OF EDUCATION

- Mary Pribbenow
- Brad Siebers
- Penny Hoh
- Deb Roberts
- Kell Bales
- Ammie Ebben
- Tim Handrich

Upcoming meetings are scheduled for April 22, 2024, May 13, 2024, and June 10, 2024. View upcoming meeting dates, agendas, and minutes online at www.kimberly.k12.wi.us.

** The above BOE member list does not reflect the April 2, 2024 results.*

NOW ENROLLING

4-YEAR-OLD & 5-YEAR-OLD KINDERGARTEN



- Highly Qualified Teachers
- 4K Morning and Afternoon Options
- A Strong Literacy Foundation
- Before/After Care Options
- Play-Based Learning



KIMBERLY.K12.WI.US

FOR YOUR INFORMATION

ABOUT THIS PUBLICATION

Welcome to the thirteenth edition of this publication from the Kimberly Area School District. Contact Jill Peeters, Marketing & Community Coordinator with questions or concerns at (920) 788-7900 or jpeeters@kimberly.k12.wi.us.


PUPIL NONDISCRIMINATION STATEMENT

The Kimberly Area School District does not discriminate on the basis of race, color, religion, national origin, ancestry, creed, pregnancy, marital status, parental status, sexual orientation, sex, (including gender status, change of sex or gender identity), or physical, mental, emotional, or learning disability ("Protected Classes") in any of its student programs and activities.

FOR MORE INFORMATION

For information about KASD, visit our website, call our District Office or find us on facebook.

 www.kimberly.k12.wi.us

 (920) 788-7900

 @KimberlyAreaSchoolDistrict