

February 2, 2022

Hello Westside Families –

Please take a moment to view our notes for this week.

## SPRING PERFORMANCE

Spring concerts are coming, mark your calendar!  
Please note that classes perform on different days and times based on your child's classroom teacher.



### Tuesday, March 22nd

#### **6pm Performance (5:50 Arrival)**

1st grade classes: Greeninger & Jenkins  
2nd grade classes: Klegin & Woldt

#### **7pm Performance (6:50 Arrival)**

3rd grade classes: Cox & Yamry  
4th grade classes: Christensen & Wadel

### Thursday, March 24th

#### **6pm Performance (5:50 Arrival)**

1st grade classes: Kitzman & Lippold  
2nd grade classes: Friebe & Schabo/Bekx

#### **7pm Performance (6:50 Arrival)**

3rd grade classes: Schuettpelz & Van Daalwyk  
4th grade classes: Eisenschink & Reider

The 5K concert will be held during the day on Wednesday, March 23. More details on their performance will be coming soon.

## LOOKING AHEAD

- Wednesday, February 9 – Jersey/Sports/
- NO SCHOOL – THURSDAY & FRIDAY – FEBURARY 10 & 11
- Monday, February 14 – Red/Pink/Purple Day
- Friday, February 18 – 2:00 Dismissal

## COMMUNITY EVENTS

Kimberly Library [Chapter Chat](#) for 5th and 6th Graders Feb/Mar/Apr.

Kimberly Library [Tween Tuesdays](#) Feb/Mar after school fun for grades 4-7

Kimberly Library [Juggler with the Yellow Shoes](#) show 2/11/2022

[Village of Kimberly Park and Rec is Hiring for Summer 2022](#)

[Learn to Skate](#) with Valley Figure Skating Club

[Women's History Month Essay Contest](#) (deadline 2/26/2022)

[Literary Competition](#) for Grades 3-12 (deadline 2/11/2022)

Fox Cities [Tech Savvy](#) STEM Conference for 6-9th grade girls 3/5/2022

Enjoy the rest of the week and please let us know if you have any questions!

Gina Vandenberg  
Westside Elementary  
920-739-3578

# WESTSIDE EAGLES UPDATE

## A Message from our Principal



February 2022

### CALENDAR OF EVENTS

2/9-Jersey/Sports/Fav Team Day

2/10— NO SCHOOL

2/11— NO SCHOOL

2/14-Red/Pink/Purple Day

2/18—2:00 DISMISSAL

2/24-Pattern Day

3/4—2:00 DISMISSAL  
and Camo Day

3/11-NOON DISMISSAL

3/17—Shamrock/Green Day

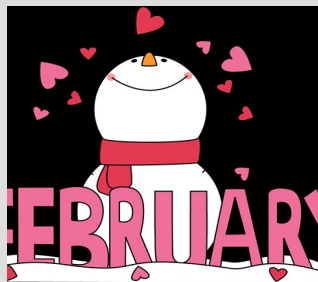
3/26-End of 3rd Quarter

3/29-Orange Day

4/1—2:00 DISMISSAL

4/7-Tie Dye Day

4/15-4/19 — NO SCHOOL



Greetings from Westside Elementary!

Great things are happening around Westside Elementary as we enter the month of February! Our 4th graders got to kick off the month with our annual lumberjack days. They learned about Wisconsin's lumber industry, their gym and music classes were lumberjack themed and they even had a very "lumberjack meal" of donuts, sausage and hot cocoa.

Academically, our students all did some sort of district assessment to measure their growth thus far this school year. 5k and 1st graders take a PALS assessment that helps teachers gather information about students' strengths and weaknesses in reading and our 2nd through 4th graders take the MAP test for math and reading. Both tests focus on growth and help us show students how much they have already progressed this year. These tests are much different than the Forward exam which only measures achievement. The reason I love students taking the MAP test is because it helps foster a growth mindset! In elementary school we push our students everyday to believe in themselves and that if they try hard they can do amazing things! We take the MAP test three times a year and parents can expect a year end report on their student in the spring. However, if you are curious about your child's growth feel free to reach out to their teacher.

In other exciting news Westside will be celebrating KINDNESS the week of the 14th. We will have kindness activities for home and school all week. It will be a fun week highlighting kindness and good deeds. We purposefully plan this kindness week this month because historically February is a hard month for peer relationships. Wisconsin winters are tough and it definitely impacts our students, their moods, and their relationships. We believe in being proactive, so our classroom teachers focus on problem solving skills and conflict resolution much of this month. If your child is struggling managing their peer relationships please feel free to reach out to their classroom teacher so we can look into additional support for them and help them solve their issues in a collaborative way! I hope you all enjoy a chilly February and feel some extra kindness coming your way the week of Valentines Day.

Stay warm!

Jonathan Peterson

## 2022-2023 School Year

**ENROLLMENT NUMBERS:** We have started to work on our enrollment numbers for the 2021-2022 school year! If you know your child(ren) will not be in the Kimberly School District next year, please notify our office as soon as possible. Thank you!

**OPEN ENROLLMENT:** Parents must submit online application forms to the non-resident district between February 7, 2022 and 4:00 PM on April 29, 2022. Late applications are not accepted for any reason. Please go to the KASD website: [www.kimberly.k12.wi.us](http://www.kimberly.k12.wi.us), click on the "students & parents" tab, then "open enrollment" for more information. **If you have any questions about open enrollment in the Kimberly Area School District, please contact Jennifer Bixler at (920) 423-4166 or [jbixler@kimberly.k12.wi.us](mailto:jbixler@kimberly.k12.wi.us).**

**4K & 5K REGISTRATION (for NEW 5K families ONLY — if your child currently attends our 4K Center, you do not need to register him/her for 5K—he/she will automatically be enrolled for 5K at Westside)** Please register 4K and (new) 5K children as soon as possible so we can plan for next year! [Here is a link to the online registration page on our website.](#) Please give us a call if you have any questions—thank you! 920-739-3578

## WESTSIDE ELEMENTARY SCHOOL

746 W THIRD STREET  
KIMBERLY WI 54136



920-739-3578

FAX 920-739-6212

WE CAN CHANGE  
THE WORLD



With KINDNESS

## KASD Wants Y O U!

### Seeking Substitute Paraprofessionals!

### Help our students reach their potential!

Do you enjoy helping kids and having a flexible schedule?

We are looking for substitute paraprofessionals.

Paraprofessionals assist teachers and students throughout the school day. Substitute paraprofessionals have a flexible work schedule and a lot of variety in their work. If you know someone who is looking for a rewarding and flexible career where they would be helping all students succeed, please help us by sharing this link with them:

[www.kimberly.k12.wi.us/careers](http://www.kimberly.k12.wi.us/careers) Thank you! :)



©BNP Design Studio • www.ClipartOf.com/1069991

## REMINDERS FROM THE OFFICE

- ⇒ **DROP-OFF REMINDERS:** BREAKFAST BEGINS at 8:00 AM—Please do not bring your children to school for breakfast BEFORE 8:00 AM. For students not eating breakfast, the **first bell rings at 8:25 AM**—students come in from outside and proceed to their classrooms. The second bell rings at 8:35 AM—students are expected to be in their seats ready to learn. If your student is entering the building at or after 8:35 AM, they are considered tardy for school.
- ⇒ **WEATHER REMINDER:** Please make sure your child(ren) dress for the temperature. Students will be going outside for recess unless it is raining or below 0 degrees with the wind chill or regular temp.
- ⇒ **MEDICATION AT SCHOOL** (including cough drops)—ALL medication MUST come to school in the original container and be accompanied by the required Medication Form ([found here](#) or in the school office). This includes BOTH prescription medication and over-the-counter medications such as, cough drops, Tylenol, cough syrup, etc. A physician AND parent signature are required for prescription medication. A parent signature is required for over-the-counter meds. If you have any questions regarding medications, please contact our office—920-739-3578. Thank you!

# FEBRUARY 2022

**Sun**      **Mon**      **Tue**      **Wed**      **Thu**      **Fri**      **Sat**

		1	2	3	4	5
6	7 PTO Meeting at 6PM in the Art Room	8	9 Jersey/ Sports/ Favorite Team Day	10 NO SCHOOL	11 NO SCHOOL	12
13	14  Happy Valen- tine's Day! Red/Pink/ Purple Day	15	16	17	18 2:00 DISMISSAL	19
20	21	22	23	24 Pattern Day	25	26
27	28					

# COUNSELOR

monthly  
newsletter

FEB

## February Life Skills

Connect @ home: Ask about what they want to be when they grow up!

5k

Lesson 1: Health and Science Careers

Lesson 2: Law and Safety Careers

1st

Lesson 1: Managing Worry

Lesson 2: Transportation & Distribution Careers

2nd

Lesson 1: Manufacturing Careers

Lesson 2: Size of the Problem



3rd

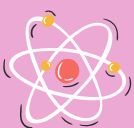
Lesson 1: STEM Careers

Lesson 2: Architecture and Construction Careers

4th

Lesson 1: Arts and Agriculture Careers

Lesson 2: ACP Survey and Career Activity



Looking Forward:

In March our Protective Behaviors lessons will begin for all students at Westside. Through these presentations and discussions, students will become more aware about the world around them, safety with strangers, what to do when home alone, different types of touch, and physical and sexual abuse (4th grade only). Students will learn basic age appropriate methods for protecting themselves against unwanted physical touch and will establish a network of trusted adults that they can talk to when needed.

We ask and encourage you to make time this month to discuss your personal views and rules on staying safe. Working together can help children better protect themselves.

If you would like to review the Protective Behaviors curriculum or have any questions, comments, or concerns, please contact me at 920-739-3578. You can also view more information and grade-level objectives by clicking

[HERE](#)

## National School Counseling Week

The week of February 7-11 celebrates National School Counseling Week! Collaboration between families, School Counselors, teachers, and administration is a huge part of ensuring that our students reach their fullest potential. I have been able to do some awesome things this year and I couldn't do it without the help of the Westside community. So far this year.....

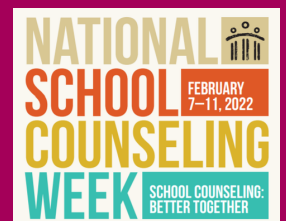
32 group counseling sessions

380 individual check-in sessions

675 contacts with students

164 Life Skills Lessons

210 students served





# Pucker Up!



Lip Suckers are **BACK**, and  
just in time for  
**Valentine's Day!**

Student Council will be  
starting sales on Tuesday,  
February 1<sup>st</sup>!

**--Cost is only \$1.00--**



# COVID-19 PROTOCOLS

When monitoring for COVID-19 symptoms, parents/guardians and students should look for:

**Major symptoms (Students should stay home and take a COVID-19 test if ONE symptom from this list is present):** Fever (above 100.4), cough (above baseline), new loss of taste/smell, trouble breathing/shortness of breath

**Minor symptoms (Students should stay home and take a COVID-19 test if TWO symptoms from this list are present):** Congestion/runny nose (above baseline), chills, nausea/vomiting, diarrhea, headache (above baseline), body aches, unusual fatigue, sore throat (above baseline)



COVID protocols vary on a case-by-case basis, but are based on CDC/Wisconsin DHS guidelines. Generally however, protocols will be:

IF MY CHILD...	AND IS...	THEN HE/SHE/THEY SHOULD...
Tests positive for COVID-19	Unvaccinated or vaccinated	<p><b>Option 1:</b></p> <ul style="list-style-type: none"> <li>Stay home for 5 days</li> <li>If you have no symptoms or your symptoms are significantly improved, you can return to school on day 6</li> <li>Wear a mask for days 6 to 10</li> </ul> <p><b>Option 2:</b></p> <ul style="list-style-type: none"> <li>Stay home for 10 days, return on day 11</li> </ul>
Has COVID-19 symptoms	Unvaccinated	<ul style="list-style-type: none"> <li>Stay home</li> <li>Take a COVID-19 test</li> <li>Stay home while awaiting test results</li> <li>Return to school with a negative result</li> <li>Begin quarantine with a positive result (or if do not test)</li> </ul>
Has COVID-19 symptoms	Vaccinated	<ul style="list-style-type: none"> <li>Follow typical illness protocol, stay home until 24 hours fever free</li> <li>COVID-19 test encouraged</li> </ul>
Is a close contact to a positive case	Unvaccinated	<p><b>Option 1:</b></p> <ul style="list-style-type: none"> <li>Quarantine for 5 days after the last contact with a positive case. Test on day 5 and with a negative result return on day 6 (provide a copy of the testing site's negative result to the office)</li> <li>Continue to wear a mask for days 6 to 10</li> </ul> <p><b>Option 2:</b></p> <ul style="list-style-type: none"> <li>Quarantine for 10 days after the last contact with a positive case, return on day 11</li> </ul>
Is a close contact to a positive case	Vaccinated	<ul style="list-style-type: none"> <li>Remain in school and monitor for symptoms for 10 days</li> <li>Mask for 10 days</li> </ul>
Is a close contact and had COVID-19 in last 90 days	Unvaccinated or vaccinated	<ul style="list-style-type: none"> <li>Remain in school and monitor for symptoms for 10 days</li> <li>Mask for 10 days</li> </ul>

# KBO PLAYER EVALUATIONS

Parents are encouraged  
to stay and watch

# K

## February 5th, 2022

**8U** - (2nd Grade) - 8:45 check in - Evaluation-9am-10am

**7U** - (1st Grade) 10:30 check in - Evaluation-10:45am-11:45am

There will be a parent meeting after they get started.

### WHAT TO BRING:

BAT, GLOVE, CLEATS (NOT METAL) OR CLEAN SHOES TO WEAR IN THE FACILITY  
(PLEASE LABEL ALL EQUIPMENT)

KBO & KHS WOULD APPRECIATE ALL ATHLETES TO WEAR A 2ND PAIR OF SHOES SO THEY DON'T  
TRACK STUFF INTO THE INDOOR FACILITY ON THE TURF.

THERE WILL BE A CHECK IN STATION WITH ASSIGNED COLORED JERSEYS AND NUMBERS. BASE-  
BALLS WILL BE PROVIDED NO NEED TO BRING ANY OF YOUR OWN.

*\*Parents please drive around the High School and park in  
the back of the building*





# Register Now

Spring soccer registration is open for  
Academy & Recreational leagues

Register Online at [kasasoccer.org](http://kasasoccer.org)



## Recreational program:

Teams are formed for players, ages 4- adults. Recreational league is a development program with a **primary interest in fun, fitness, and friendships**. Activities emphasize enjoyment and development to foster a love of soccer. Birth years of 2017 and earlier are eligible to participate. Register early to request and ensure a spot on a roster with your friends as registration will close when team rosters are full.

**First game is May 15th**

## Academy program:

Interested in a **competitive, educational yet fun environment**? Our Academy program offers a higher level of commitment through advanced training and development models. Kids born in 2012- 2015, who have already been introduced to soccer and love it, are encouraged to join. Practices are 2 nights a week and games are on Saturdays. Game and training jerseys are included with registration fees.

**First game is April 30th**

## Spring season begins soon!

Early Bird fees expire on February 15th  
If you have any questions, please contact us at [registrar@kasasoccer.org](mailto:registrar@kasasoccer.org)



VILLAGE OF KIMBERLY PARKS & RECREATION

# Summer Baseball Leagues

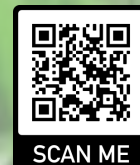
---

**Online registration is now open for all leagues. Options for ages 3–13, all ability levels. Leagues begin as soon as mid-May and conclude in late July. Registration closes March 13th and early bird pricing ends January 31st, register today!**

---

**Register any time at:**

<https://kimberly.recdesk.com/Community/Program>



SCAN ME



Westside  
**PTO**

**COME TO OUR  
MEETINGS!**

**FIRST MONDAY OF  
THE MONTH @ 6 PM**

We're raising money for exciting upcoming activities and upgrades to the school! Show your support by coming to meetings, shopping Amazon Smile or donating directly!

**FOR MORE INFO, TEXT  
920-358-4489**

# Weekend Backpack Program

In partnership with the St. Joseph Food Program

Are you in need of extra food on the weekend when school meals are not available?

*WE CAN HELP!*

We will provide you with a bag of basic, small meals & snacks (per child) that will be sent home on Fridays during the school year.

There is no need to provide documentation to be eligible.

Contact your child(ren)'s school counselor  
or the KASD School Social Worker, Katie DeLain at:  
423-4159 or [kdelain@kimberly.k12.wi.us](mailto:kdelain@kimberly.k12.wi.us)



# Join OUR TEAM!





Kimberly Area School District is seeking support from our community. Make a difference and consider becoming a **substitute teacher** or a **substitute paraprofessional**.

APPLY NOW AT  
[kimberly.k12.wi.us/careers](http://kimberly.k12.wi.us/careers)



**Kimberly Area  
School District**

## FLEXIBLE & REWARDING

-  Earn extra income while your child is at school.
-  Turn your volunteer hours into a paid position.
-  No prior teaching experience needed.
-  Maintain a flexible work schedule.
-  Help students succeed.

# INFORMATION FOR PARENTS



## IF YOUR FAMILY LIVES IN ANY OF THE FOLLOWING SITUATIONS:

In a shelter



In a motel or campground due to the lack of an alternative adequate accommodation



In a car, park, abandoned building, or bus or train station



Doubled up with other people due to loss of housing or economic hardship

*Your school-age children may qualify for certain rights and protections under the federal McKinney-Vento Act.*

### Your eligible children have the right to:

- Receive a free, appropriate public education.
- Enroll in school immediately, even if lacking documents normally required for enrollment.
- Enroll in school and attend classes while the school gathers needed documents.
- Enroll in the local school; or continue attending their school of origin (the school they attended when permanently housed or the school in which they were last enrolled), if that is your preference.
  - \* If the school district believes that the school you select is not in the best interest of your children, then the district must provide you with a written explanation of its position and inform you of your right to appeal its decision.
- Receive transportation to and from the school of origin, if you request this.
- Receive educational services comparable to those provided to other students, according to your children's needs.

*If you believe your children may be eligible, contact the local liaison to find out what services and supports may be available. There also may be supports available for your preschool-age children.*



#### Local Liaison

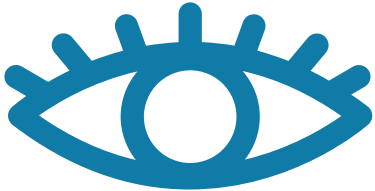
**KASD Homeless Liaison**  
Rob DeLain  
920.788.7905

#### State Coordinator

**WI State Coordinator**  
Kristine Nadolski  
608.267.7338

If you need further assistance with your children's educational needs,  
contact the National Center for Homeless Education:  
**1-800-308-2145** ★ **homeless@serve.org** ★ **http://nche.ed.gov**

# IF YOU SEE SOMETHING



# SAY SOMETHING



**IF YOU**  
See something  
Read something  
Hear something  
Know something  
Then you should  
**SAY SOMETHING**



**TELL YOUR**  
Parent  
Teacher  
Principal  
School Counselor  
School Secretary  
Librarian  
Any Trusted Adult  
*Or Call 911 for  
Emergencies*

We are encouraging school and community members to become the eyes and ears of the Kimberly Area School District in order to provide information that keeps our students, staff and schools safe.

It sometimes can be difficult to define:

- Take your time to pay attention to your surroundings and to the behaviors of others around you.
- Know what suspicious or concerning behaviors look like.
- Does the activity look strange to you?
- Are you worried someone you know is thinking about hurting others or themselves?

**Report it, don't just repeat it.**



**Kimberly Area  
School District**

*See Something, Say Something® is modeled after  
the Department of Homeland Security's program.*

# BUZZ IN KIMBERLY SCHOOLS KINDERGARTEN REGISTRATION



Is your child going to be 4 or 5 years old by September 1, 2022?

## IT'S TIME TO ENROLL YOUR NEWEST PAPERMAKER FOR 2022-2023!

Residents in the Kimberly Area School District can now register their newest Papermaker in Kindergarten.

### Registration is quick and easy...

1. Complete the required forms online at <http://www.kimberly.k12.wi.us/parents/registration>
  - If you do not have computer access, computers will be available at any of KASD's schools or the District office.
  - If you are unable to stop in during normal business hours, please contact the school secretary to set-up a time to stop in.
2. Birthdates are confirmed through the Wisconsin Immunization Registry. For non-immunized students or students registering from out of state an ORIGINAL birth certificate must be brought in at some point after you have registered online. The birth certificate can be brought to any of the schools listed on the right or KASD's District Office.

The Kimberly Area School District takes a nurturing approach to 4K and 5K development. It is expected, as with all grades, that students will be ready for the next grade level at the end of the school year.

#### 4K CENTER FOR LITERACY

614 East Kimberly Avenue, Kimberly  
Phone: (920) 423-4190

#### JANSSEN ELEMENTARY SCHOOL

420 Wallace Street, Combined Locks  
Phone: (920) 788-7915

#### SUNRISE ELEMENTARY SCHOOL

N9363 Exploration Drive, Appleton  
Phone: (920) 954-1822

#### WESTSIDE ELEMENTARY SCHOOL

746 West Third Street, Kimberly  
Phone: (920) 739-3578

#### WOODLAND ELEMENTARY SCHOOL

N9085 North Coop Road, Appleton  
Phone: (920) 730-0924



*The Kimberly Area School District does not discriminate on the basis of race, color, religion, national origin, ancestry, creed, pregnancy, marital status, parental status, sexual orientation, sex, (including transgender status, change of sex or gender identity), or physical, mental, emotional, or learning disability ("Protected Classes") in any of its student programs and activities.*