

February 27, 2019

Hello Westside Families –

Please take a moment to read our **March Newsletter** which is attached.

IMPORTANT REMINDER – 2:00 DISMISSAL – THIS FRIDAY, March 1

- All Students are dismissed at 2:00
- Busses & Daycare vans transport students at 2:00
- Y-Care at Westside begins at 3:35
- If your child is on the list to attend the after-school supervision (movie) he or she will be expected to report there. The only way an exception can be made is if you send a note or call the office.
- Please make sure your child knows your family's plan to avoid confusion on Friday. Thank you! 😊

FROM PTO: The Dr. Seuss Birthday Party for this Saturday has been cancelled. Please see the attached flyer for details.

COMMUNITY EVENTS:

Online registration for [Village of Kimberly Baseball](#) starts February 4, 2019

[Youth Volleyball League](#) at J.R. Gerritts - February through April, 2019

Darboy Kiwanis will host [Super Science Saturday](#) March 9, 2019 from 9:30 a.m.- 12:00 p.m.

Kimberly Park & Rec Spring Break [Babysitting Class](#), April 15, 2019

Kimberly Park & Rec Spring Break [Canvas Painting Class](#), April 16, 2019

Kimberly Park & Rec Spring Break [Tumbling Tots Class](#) April 18, 2019

Combined Locks Recreation Dept. [Baseball, Softball and Tee Ball Registration](#) is open online
Summer 2019 [YMCA Camp Nan A Bo](#) Sho Flyer

Enjoy the rest of the week and as always, please give us a call if you have any questions. Thank you!

Anne Appleton
Westside Elementary
920-739-3578

Unfortunately, due to the lack of volunteers our Dr. Seuss Birthday celebration for this weekend has been cancelled. We appreciate those who signed up to volunteer, but unfortunately these events cannot be successful without the help of parent volunteers.

~Westside PTO~



WESTSIDE EAGLES UPDATE

A Message from our Principal



March, 2019

3/1-2:00 Dismissal

3/5-Career Day-rescheduled

3/12-SPRING PROGRAM

6:30-3rd Grade

7:15-4th Grade

2:00-School Performance

3/13-5K Music Concert-2:30

3/14-PTO Meeting-6:30

3/15-NOON Dismissal

3/25-End of 3rd Quarter

4/5-2:00 Dismissal

4/15-4/19-Spring Break-No School

5/10-NOON Dismissal

5/24-NOON Dismissal

5/27-NO SCHOOL-Memorial Day



Greetings from Westside Elementary!

It was great seeing so many people at our PTO's 80's dance this past Friday! Once again the Westside community outdid itself with amazing 80's apparel! We had a hip hopper, rubix cube, and a mohawk to name a few. How fun! I am not sure if you all noticed, but our school's custodian, Jaimie Bradley was in attendance. She joined us a few months back and has been a fantastic addition to Westside. She embraces our school culture that puts students first! I encourage you to ask your children about her. Throughout the day I have seen her eating lunch with our 5kers, playing kickball with 3rd graders, ice- skating with 4th graders...all while keeping our school super clean and safe! She has been working especially hard the past few weeks clearing out all the snow and ice around our building!

In safety news, we are into our 2nd week operating with all of our doors locked from 8:45 to 3:15. All guests that come during that time have to ring our buzzer and potentially answer a few questions before gaining access to the building. We are still working out the bugs, but we encourage you to give us feedback. We want Westside to be safe, but not at the cost of our welcoming school community. If you have suggestions please share!

Lastly, I look forward to seeing our 3rd and 4th grade parents and families for our upcoming spring concerts. All those darn snow and cold days have put a cramp in Mrs. Kinzel's style! She is nervous, but I have no doubt our 3rd and 4th graders will shine like always. If you haven't seen a Westside Elementary concert you haven't seen a real elementary concert!

Stay warm and safe out there!

Jonathan Peterson
Principal



Mr. Jonathan Peterson
Principal

746 W Third Street
Kimberly, WI 54136

Phone: (920)739-3578
Fax: (920)739-6212

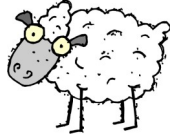
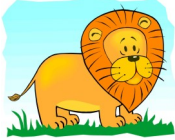
Westside Elementary School

746 W. Third Street

Kimberly, WI 54136

920-739-3578 FAX: 920-739-6212

OFFICE HOURS: 7:30-4:00



The Kimberly Area School District does not discriminate on the basis of race, color, religion, national origin, ancestry, creed, pregnancy, marital status, parental status, sexual orientation, sex, (including transgender status, change of sex or gender identity), or physical, mental, emotional, or learning disability ("Protected Classes") in any of its student programs and activities.

YEARBOOKS... LAST CHANCE

All yearbooks must be ordered by March 29th. If you haven't had a chance to order one, there is still time! You can order in the school office or on Infinite Campus in the parent portal. Cost per yearbook is \$11.00. Yearbooks will be distributed to students in late May.

KASD Wants Y O U!!

Seeking Substitute Paraprofessionals!

Help our students reach their potential!

Do you enjoy helping kids and having a flexible schedule? We are looking for substitute paraprofessionals. Paraprofessionals assist teachers and students throughout the school day. Substitute paraprofessionals have a flexible work schedule and a lot of variety in their work. If you know someone who is looking for a rewarding and flexible career where they would be helping all students succeed, please help us by sharing this link with them:
www.kimberly.k12.wi.us/careers Thank you! :)



COMMUNITY EVENTS

Are you looking for opportunities in our local community? Our KASD website has a page devoted to keeping you informed of upcoming events and opportunities for children and families. Please visit this page often so you can stay informed. [Click here for more information!](#)

State Testing Coming Up!

It is getting to that time of year when state assessments will be starting. This year, the Forward Exam testing dates for Westside 3rd and 4th graders will be from the week of March 25 through the week of April 8.

(Make-up testing, if necessary, will occur after Spring Break). Both 3rd and 4th grades have designated days during this time to take specific portions of the assessment. As in the past, we ask that families try to avoid scheduling appointments, vacations, etc. during those weeks. More information with specific testing schedules will be sent home soon. If you have any questions regarding Forward Exam testing, please contact your child's teacher. Thank you!



FROM KASD: Are you on our mailing list?

We want to ensure parents of young children (age 0-5) in our District are on our mailing list, so you can receive information relative to your child's age group, such as early childhood screening information or 4K and 5K registration information. We also need to have information for all children age 0-21 for state reporting. [Click on this link to complete the census form](#), or [complete and mail the census form found here](#). If you know of other families with children in our District that may not be in our system, please help us by sharing this information with them.



2019-2020 School Year

ENROLLMENT NUMBERS: We have started to work on our enrollment numbers for the 2019-2020 school year! If you know your child(ren) will not be in the Kimberly School District next year, please notify our office as soon as possible. Thank you!






OPEN ENROLLMENT: Parents must submit online application forms to the non-resident district between February 4, 2019 and 4:00 PM on April 30, 2019. Late applications are not accepted for any reason. Please go to the KASD website: www.kimberly.k12.wi.us, click on the "parents" tab, then "open enrollment" for more information. **If you have any questions about open enrollment in the Kimberly Area School District, please contact Jennifer Bixler at (920) 423-4166 or jbixler@kimberly.k12.wi.us.**

4K & 5K Registration is ongoing: Please register your children as soon as possible so we can plan for next year! (If your child is currently attending the 4K Center, you do not have to register him/her for 5K—he/she will automatically be enrolled for 5K at Westside.) [Here is a link to the online registration page on our website.](#) Please give us a call if you have any questions—thank you! 920-739-3578



MARCH 2019



Sun	Mon	Tue	Wed	Thu	Fri	Sat
					1 2:00 DISMISSAL Pirate Day 	2
3	4	5 Career Day!	6	7 4th Grade to PAC 11:40-2:00	8 3rd Grade to YMCA-12:40-3:00	9
10	11	12 SPRING CONCERT Grade 3-6:30 Grade 4-7:15 2:00 School Performance	13 5K Music Program-2:30	14 PTO-6:30 LMC	15 NOON DISMISSAL Shamrock/Green Day 	16
17 Happy St. Patrick's Day! 	18	19	20 First Day of Spring! 	21 5K & 2nd Grade to PAC 11:30-2:15	22	23
24	25	26	27	28 Let's Celebrate Opening Day! Wear your baseball gear! 	29	30



Westside Elementary School

746 W. 3rd Street • Kimberly, WI 54136
(920) 739-3578 • FAX (920) 739-6212 • www.kimberly.k12.wi.us



The Kimberly Area School District is dedicated to providing the safest environment for our students and staff. During the 2018-19 school year, schools will be implementing a new secure access system, commonly known as a “buzz-in entry”.

HERE’S HOW IT WORKS:

- All visitors (including family members, volunteers, and vendors are required to follow the buzz-in procedure during the school day.)
- When you arrive, press the button on the intercom. Guests may be asked to present a government issued ID to the security camera.
- A staff member may ask you some clarifying questions before granting access to the building.
- Once inside, continue to sign in at the office and wear a visitor badge while in the school.
- Anyone unfamiliar with the buzz-in procedure can refer to instructions posted at the main entrance of the school.
- We realize this system will require a change in practice from staff, families, and visitors.
- Thank you for your support as we work to create the safest learning environment possible.



By learning through dialogue and play in 4K, our students start here and excel here.

Now accepting 4K and new 5K registrations for next school year!

Our highly qualified teachers are early childhood experts whose goal is to engage our youngest students through dialogue and play-based learning.

At the 4K Center for Literacy, students build a strong foundation to continue their studies in Kimberly.

Wrap around care options are also available.

We are accepting new kindergarten registrations and open enrollment applications for next school year.

Help us spread the word to families you know!



**Kimberly Area
School District**

Is your Minimaker ready to start here and excel here?

Full-service 4K Center • Full-day 5K in Elementary Schools

Open enrollment applications accepted until April 30, 2019

Learn more about Registration and Open Enrollment:

www.kimberly.k12.wi.us • (920) 788-7900

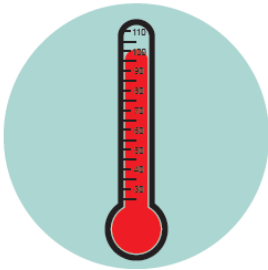
** Start Here,
Excel Here.**

The Kimberly Area School District does not discriminate on the basis of race, color, religion, national origin, ancestry, creed, pregnancy, marital status, parental status, sexual orientation, sex, (including transgender status, change of sex or gender identity), or physical, mental, emotional, or learning disability ("Protected Classes") in any of its student programs and activities.

When to Keep Your Child Home

Children should be kept home from school when they don't feel well. It is important to get the rest they need to recover, and to prevent the spread of germs to other children and the staff. If you are unsure of when to keep your child home, please contact the school nurse or your family medical provider.

The following symptoms may suggest a communicable disease. Children who have the following symptoms should be kept home from school until a doctor has seen them, they no longer have symptoms indicating a communicable disease or they have received treatment for at least 24 hours for certain diseases.



FEVER

An oral temperature of 100.4 or higher indicates a fever. If your child has a temp of 100.4 or higher at school he/she will be sent home. Your child will be excluded from school until they are fever free for 24 hours without the use of a fever reducer (Tylenol or Ibuprofen product).



SORE THROAT

If a fever is accompanied by a sore throat, stomach ache or head ache it may be strep throat. Strep throat is diagnosed by a throat culture obtained at a medical clinic. If your child is diagnosed with strep throat, your child will be excluded from school for 24 hours after initiation of appropriate antibiotic and fever free without the use of a fever reducer (Tylenol or Ibuprofen product).



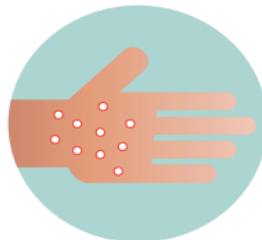
VOMITING/DIARRHEA

If your child has an episode of vomiting and/or diarrhea at school, he/she will be sent home. Anyone with these symptoms will be excluded from school until symptom free for 24 hours.



COUGH

A cough may be a sign of many different illnesses. If a cough is accompanied by a fever, sore throat, body aches or any other symptoms you should keep your child home. Any cough that lasts for more than several days should be discussed with a doctor.



SKIN LESIONS/SORES

Rashes and infected sores needed to be diagnosed by a medical provider. Many skin rashes such as impetigo, scabies, chicken pox, Fifth disease or Hand Foot and Mouth disease are very contagious. Students may return to school once the rash has been diagnosed and treated for 24 hours or cleared by a doctor. Open sores from illnesses such as chicken pox and impetigo may need to be covered at school with bandages for several days.



OTHER

Symptoms that prevent the student from active participation in usual school activities OR student is requiring more care than school that can safely provide.

Resource: State of Wisconsin, Department of Health Services, Childhood Communicable Disease Chart